



## **Department of Physics**

### **Stake Holders Feedback Reports**

- **Students Feedback**
- **Faculty Feedback**
- **Alumni Feedback**
- **Feedback Analysis Report**
- **Action Taken Report**

# SRI DHARMASTHALA MANJUNATHESHWARA COLLEGE (AUTONOMOUS)

UJIRE - 574 240



DAKSHINA KANNADA, KARNATAKA STATE  
(Re-Accredited by NAAC at 'A' Grade with CGPA 3.61 out of 4)  
Ph: 08256-236221, 236101(O), Fax: 236220

e-Mail: sdmcollege@rediffmail.com, sdmcollege@sdmcyjire.in, Website: www.sdmcyjire.in

## DEPARTMENT OF PHYSICS

### STUDENT FEEDBACK

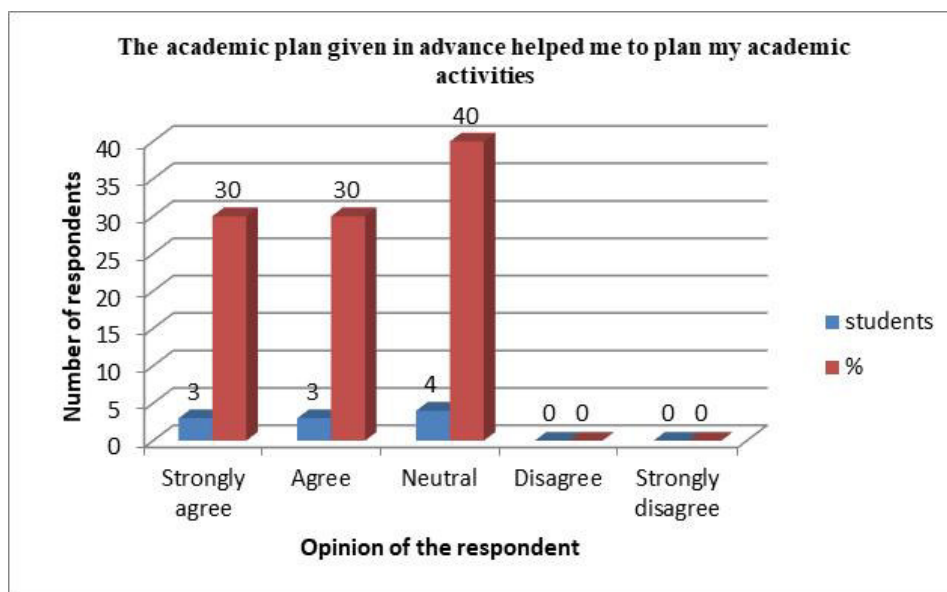
#### ACADEMIC YEAR 2022-23

Number of  
respondents: 10

**Table 1: The academic plan given in advance helped me to plan my academic activities**

Opinion	Number of respondents	%
Strongly agree	3	30
Agree	3	30
Neutral	4	40
Disagree	0	0
Strongly disagree	0	0
<b>Total</b>	<b>10</b>	<b>100</b>

**Chart 1: The academic plan given in advance helped me to plan my academic activities**



**Interpretation:** 30% of the respondents strongly agree and 30% agree that the academic

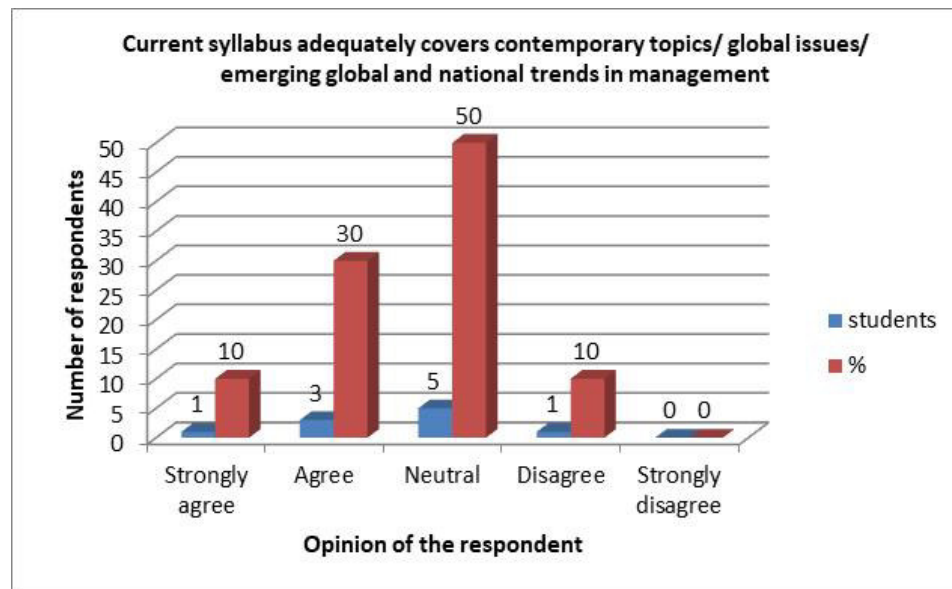
plan given in advance helped them to plan my academic activities

30%respondents areneutral.

**Table2:Current syllabus adequately covers contemporary topics/ global issues/ emerging global and national trends in management**

Opinion	Numberofrespondents	%
Stronglyagree	1	10
agree	3	30
Neutral	5	50
Disagree	1	10
Strongly Disagree	0	0
<b>Total</b>	<b>10</b>	<b>10%</b>

**Chart2:Current syllabus adequately covers contemporary topics/ global issues/ emerging global and national trends in management**



**Interpretation:**

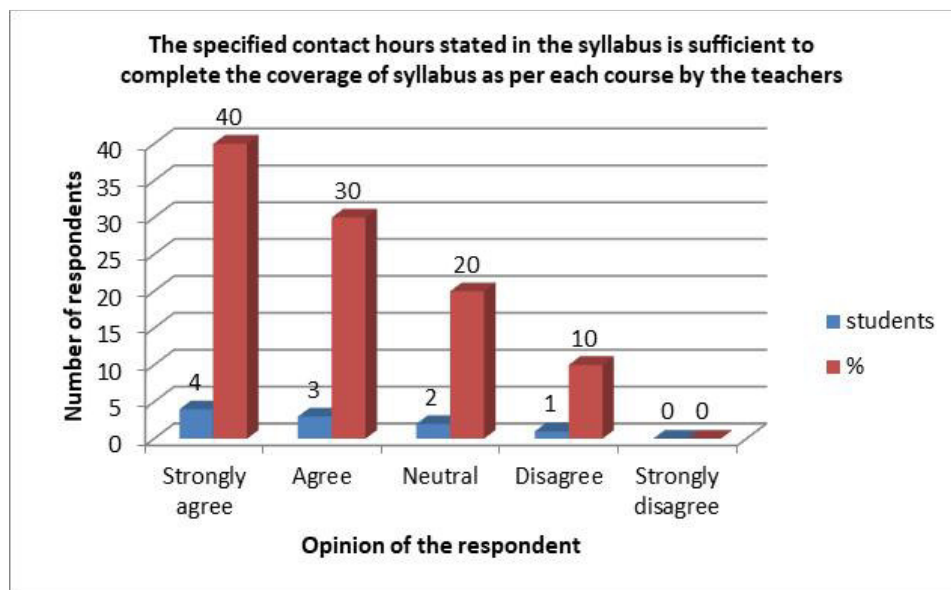
**10% of respondents strongly agree and 30 % agree** that Current Syllabusadequately covers contemporary topics/global issues/emerging global and national trends in management.50%areneutral.



**Table3: The specified contact hours stated in the syllabus is sufficient to complete the coverage of syllabus as per each course by the teachers**

Opinion	Number of respondents	%
Strongly agree	4	40
agree	3	30
Neutral	2	20
Disagree	1	10
Strongly Disagree	0	0
<b>Total</b>	<b>10</b>	<b>100%</b>

**Chart3: The specified contact hours stated in the syllabus is sufficient to complete the coverage of syllabus as per each course by the teachers**



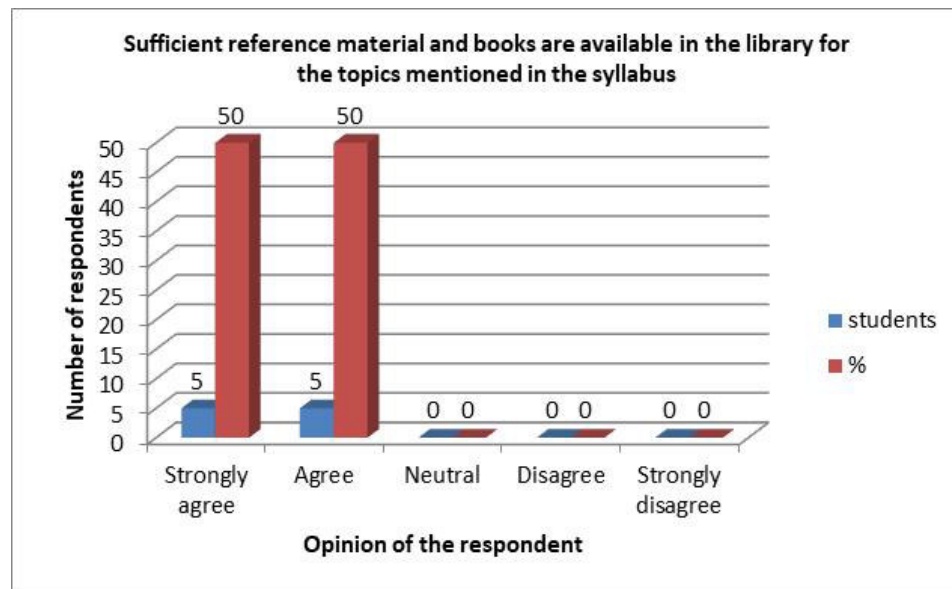
#### Interpretation

**40% of respondents strongly agree and 30% agree** that the specified contact hours stated in syllabus is sufficient to complete the coverage of syllabus as per each course by the teachers. **20% respondents are neutral.**

**Table4: Sufficient reference material and books are available in the library for the topics mentioned in the syllabus**

Opinion	Numberofrespondents	%
Stronglyagree	5	50
Agree	5	50
Neutral	0	0
Disagree	0	0
Strongly Disagree	0	0
<b>Total</b>	<b>10</b>	<b>100</b>

**Chart4: Sufficient reference material and books are available in the library for the topics mentioned in the syllabus**



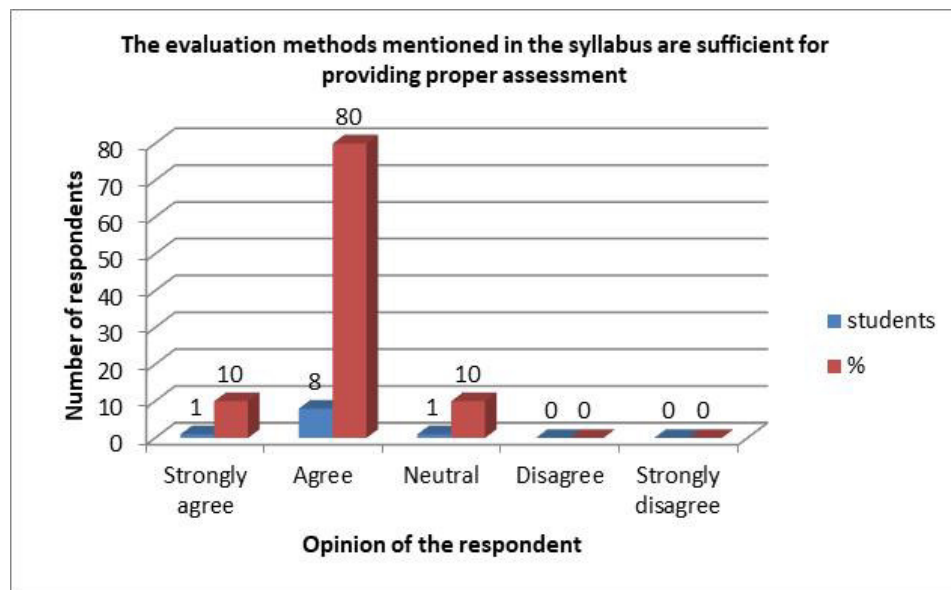
#### Interpretation

**50% of respondents strongly agree and 50% agree** that Sufficient reference materials and books are available in the library for the topics mentioned in the syllabus.

**Table5: The evaluation methods mentioned in the syllabus are sufficient for providing proper assessment**

Opinion	Number of respondents	%
Strongly agree	1	10
Agree	8	80
Neutral	1	10
Disagree	0	0
Strongly Disagree	0	0
<b>Total</b>	<b>10</b>	<b>100</b>

**Chart5: The evaluation methods mentioned in the syllabus are sufficient for providing proper assessment**



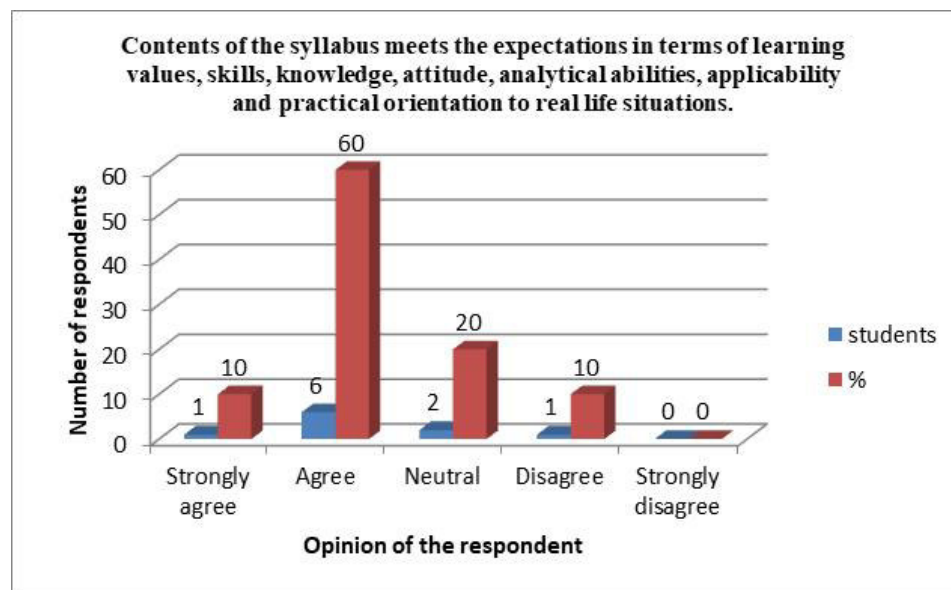
#### Interpretation

**10% of respondents strongly agree and 80% agree** that the evaluation methods mentioned in the syllabus are sufficient for providing proper assessment.

**Table6:Contents of the syllabus meets the expectations in terms of learning values, skills, knowledge, attitude, analytical abilities, applicability and practical orientation to real life situations.**

Opinion	Numberofrespondents	%
Stronglyagree	1	10
Agree	6	60
Neutral	2	20
Disagree	1	10
Strongly Disagree	0	0
<b>Total</b>	<b>10</b>	<b>100%</b>

**Chart6:Contents of the syllabus meets the expectations in terms of learning values, skills, knowledge, attitude, analytical abilities, applicability and practical orientation to real life situations.**



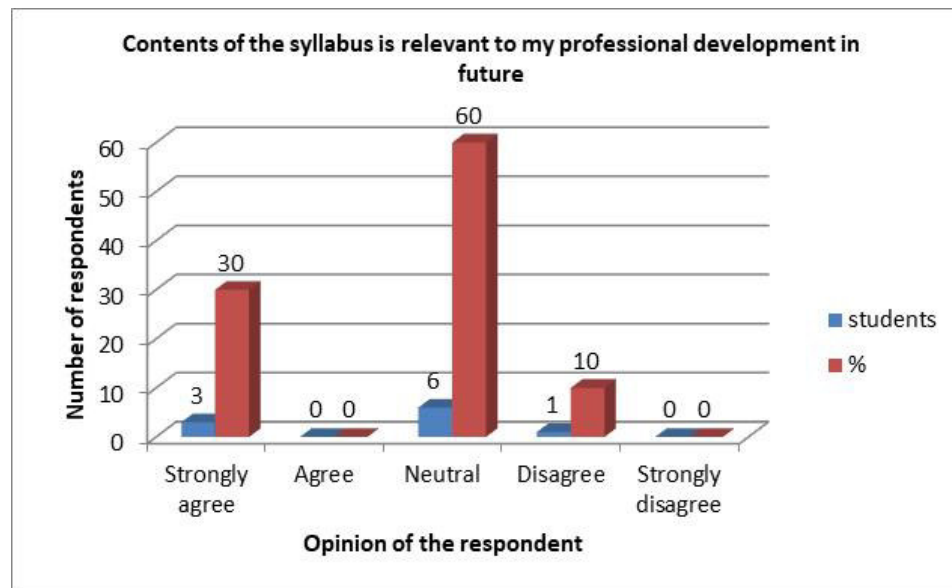
#### Interpretation

**10% of respondents strongly agree and 60 % agree** that contents of the syllabus meets the expectations in terms of learning values, skills, knowledge, attitude, analytical abilities, applicability, relevance and practical orientation to real life situations.

**Table7:Contents of the syllabus is relevant to my professional development in future**

Opinion	Numberofrespondents	%
Stronglyagree	3	30
Agree	0	0
Neutral	6	60
Disagree	1	10
Strongly Disagree	0	0
<b>Total</b>	<b>10</b>	<b>100%</b>

**Chart7:Contents of the syllabus is relevant to my professional development in future**



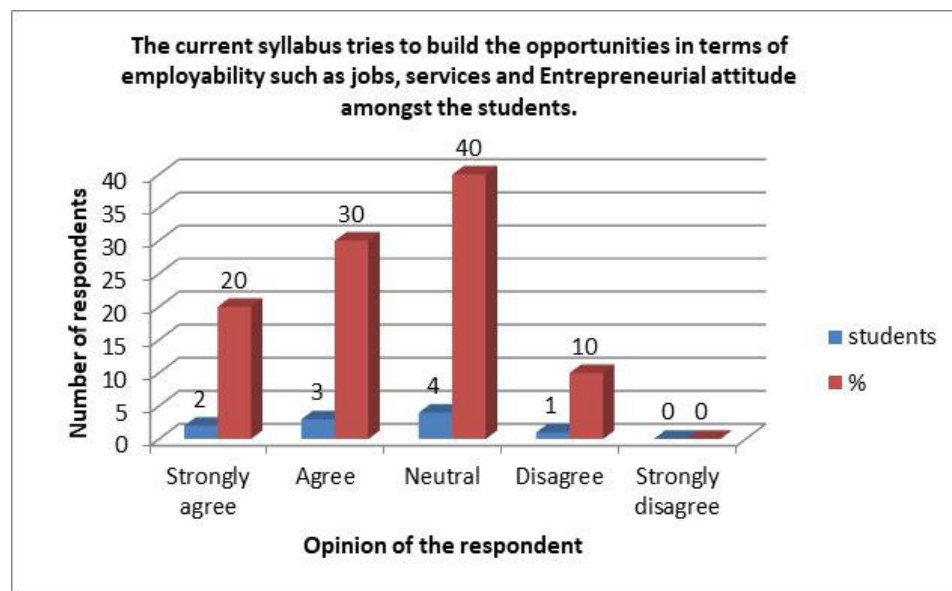
#### Interpretation

30% of respondents strongly agree that the contents of the syllabus is relevant to my professional development in future 60%areneutral.

**Table8:**The current syllabus tries to build the opportunities in terms of employability such as jobs, services and Entrepreneurial attitude amongst the students.

Opinion	Numberofrespondents	%
Stronglyagree	2	20
Agree	3	30
Neutral	4	40
Disagree	1	10
Strongly Disagree	0	0
<b>Total</b>	10	100

**Chart8:**The current syllabus tries to build the opportunities in terms of employability such as jobs, services and Entrepreneurial attitude amongst the students.



**Interpretation:**

**20%ofrespondentsstronglyagree** and **30%agreethatthecurrentsyllabustriestobuildtheopportunitiesintermsofemployabilitysuchasJobs,ServicesandEntrepreneurialattitudeamongst thestudents.40%respondentsareneutral.**

## **MAJOR FINDINGS**

**It is found that nearly 90% of respondents strongly agree or agree with the statements given in the questionnaire**

## **MAJOR SUGGESTIONS**

- Organize field visits or internships
- Add more topics on Astrophysics

# SRI DHARMASTHALA MANJUNATHESHWARA COLLEGE (AUTONOMOUS)

UJIRE - 574 240



DAKSHINA KANNADA, KARNATAKA STATE

(Re-Accredited by NAAC at 'A' Grade with CGPA 3.61 out of 4)

Ph: 08256-236221, 236101(0), Fax: 236220

e-Mail: sdmcollege@rediffmail.com, sdmcollege@sdmcollege.in, Website: www.sdmcollege.in

## STUDENT FEEDBACK FOR DESIGN AND REVIEW OF SYLLABUS

Name & Roll Number: Ujwal Kumar [210339]

Name of the Respondent

Please tick on a the scale with the appropriate response

Scale: 1 – Strongly Disagree, 2 – Disagree, 3 – Neutral, 4 – Agree and 5 – Strongly Agree

Sl. No.	Particulars	1	2	3	4	5
1	The academic plan given in advance helped me to plan my academic activities			✓		
2	Current Syllabus adequately covers contemporary topics /global issues/emerging global and national trends in management			✓		
3	The specified contact hours stated in syllabus is sufficient to complete the coverage of syllabus as per each course by the teachers		✓			
4	Sufficient reference materials and books are available in the library for the topics mentioned in the syllabus				✓	
5	The evaluation methods mentioned in the syllabus are sufficient for providing proper assessment				✓	
6	Contents of the syllabus meets the expectations in terms of learning values, skills, knowledge, attitude, analytical abilities, applicability, relevance and practical orientation to real life situations.				✓	
7	Contents of the syllabus is relevant to my professional development in future			✓		
8	The current syllabus tries to build the opportunities in terms of employability such as Jobs, Services and Entrepreneurial attitude amongst the students.			✓		

Any suggestions: Should Consider the topics ~~de~~ related to the Astrophysics and Cosmic Studies as these topics are never covered. And if possible Please reduce some amount of syllabus as there is no sufficient time to complete the whole semester and include more Audio Visuals to explain the topics. Should include Field trips.

Name and Signature of Student



# SRI DHARMĀSTHALA MANJUNATHĒSHWARA COLLEGE (AUTONOMOUS)

UJIRE - 574 240



DAKSHINA KANNADA, KARNATAKA STATE

(Re-Accredited by NAAC at 'A' Grade with CGPA 3.61 out of 4)

Ph: 08256 236221, 236101(0), Fax: 236220

e-Mail: sdmcollege@rediffmail.com, sdmcollege@sdmcujire.in, Website: www.sdmcujire.in

## STUDENT FEEDBACK FOR DESIGN AND REVIEW OF SYLLABUS

Name & Roll Number: **PAVAN KUMAR V G [220336]**

Name of the Respondent

Please tick on a the scale with the appropriate response

Scale: 1 – Strongly Disagree, 2 – Disagree, 3 – Neutral, 4 – Agree and 5 – Strongly Agree

Sl. No.	Particulars	1	2	3	4	5
1	The academic plan given in advance helped me to plan my academic activities				✓	
2	Current Syllabus adequately covers contemporary topics /global issues/emerging global and national trends in management			✓		
3	The specified contact hours stated in syllabus is sufficient to complete the coverage of syllabus as per each course by the teachers					✓
4	Sufficient reference materials and books are available in the library for the topics mentioned in the syllabus					✓
5	The evaluation methods mentioned in the syllabus are sufficient for providing proper assessment				✓	
6	Contents of the syllabus meets the expectations in terms of learning values, skills, knowledge, attitude, analytical abilities, applicability, relevance and practical orientation to real life situations.			✓		
7	Contents of the syllabus is relevant to my professional development in future			✓		
8	The current syllabus tries to build the opportunities in terms of employability such as Jobs, Services and Entrepreneurial attitude amongst the students.		✓			

Any suggestions: *The syllabus must be increased (like previous years)  
Increase the number of theory classes (atleast one class per day)*

Name and Signature of Student

*Pavan*

# SRI DHARMASTHALA MANJUNATHESHWARA COLLEGE (AUTONOMOUS)

UJIRE - 574 240



DAKSHINA KANNADA, KARNATAKA STATE

(Re-Accredited by NAAC at 'A' Grade with CGPA 3.61 out of 4)

Ph: 08256-236221, 236101(0), Fax: 236220

e-Mail: sdmcollege@rediffmail.com, sdmcollege@sdmcollege.in, Website: www.sdmcollege.in

## STUDENT FEEDBACK FOR DESIGN AND REVIEW OF SYLLABUS

Name & Roll Number: *SUNEHA BEGAM 220338*

Name of the Respondent

Please tick on a the scale with the appropriate response

Scale: 1 – Strongly Disagree, 2 – Disagree, 3 – Neutral, 4 – Agree and 5 – Strongly Agree

Sl. No.	Particulars	1	2	3	4	5
1	The academic plan given in advance helped me to plan my academic activities					✓
2	Current Syllabus adequately covers contemporary topics /global issues/emerging global and national trends in management				✓	
3	The specified contact hours stated in syllabus is sufficient to complete the coverage of syllabus.as per each course by the teachers					✓
4	Sufficient reference materials and books are available in the library for the topics mentioned in the syllabus				✓	
5	The evaluation methods mentioned in the syllabus are sufficient for providing proper assessment				✓	
6	Contents of the syllabus meets the expectations in terms of learning values, skills, knowledge, attitude, analytical abilities, applicability, relevance and practical orientation to real life situations.					✓
7	Contents of the syllabus is relevant to my professional development in future				✓	
8	The current syllabus tries to build the opportunities in terms of employability such as Jobs, Services and Entrepreneurial attitude amongst the students.				✓	

Any suggestions: *No*

*Suneha Begam*  
Name and Signature of Student



# SRI DHARMASTHALA MANJUNATHESHWARA COLLEGE (AUTONOMOUS)

UJIRE - 574 240



DAKSHINA KANNADA, KARNATAKA STATE  
(Re-Accredited by NAAC at 'A' Grade with CGPA 3.61 out of 4)  
Ph: 08256 236221, 236101(0), Fax: 236220  
e-Mail: sdmcollege@rediffmail.com, sdmcollege@sdmcujire.in, Website: www.sdmcujire.in

## STUDENT FEEDBACK FOR DESIGN AND REVIEW OF SYLLABUS

Name & Roll Number: Girishkrishna K

Name of the Respondent 220288

Please tick on a the scale with the appropriate response

Scale: 1 - Strongly Disagree, 2 - Disagree, 3 - Neutral, 4 - Agree and 5 - Strongly Agree

Sl. No.	Particulars	1	2	3	4	5
1	The academic plan given in advance helped me to plan my academic activities			✓		
2	Current Syllabus adequately covers contemporary topics /global issues/emerging global and national trends in management		✓			
3	The specified contact hours stated in syllabus is sufficient to complete the coverage of syllabus as per each course by the teachers				✓	
4	Sufficient reference materials and books are available in the library for the topics mentioned in the syllabus				✓	
5	The evaluation methods mentioned in the syllabus are sufficient for providing proper assessment			✓		
6	Contents of the syllabus meets the expectations in terms of learning values, skills, knowledge, attitude, analytical abilities, applicability, relevance and practical orientation to real life situations.		✓			
7	Contents of the syllabus is relevant to my professional development in future		✓			
8	The current syllabus tries to build the opportunities in terms of employability such as Jobs, Services and Entrepreneurial attitude amongst the students.				✓	

Any suggestions:

→ Can improve the learning experience by including videos & inclusive hands on activities

→ Can include more seminar topics

→

  
Girishkrishna K  
Name and Signature of Student

# SRI DHARMASTHALA MANJUNATHESHWARA COLLEGE (AUTONOMOUS)

UJIRE - 574 240

DAKSHINA KANNADA, KARNATAKA STATE  
(Re Accredited by NAAC at 'A' Grade with CGPA 3.61 out of 4)  
Ph: 08256 236221, 236101(0), Fax: 236220  
e-Mail: sdmcollege@rediffmail.com, sdmcollege@sdmcujire.in, Website: www.sdmcujire.in

## STUDENT FEEDBACK FOR DESIGN AND REVIEW OF SYLLABUS

Name & Roll Number: *Rathidisha B.M (220335)*

Name of the Respondent

Please tick on a the scale with the appropriate response

Scale: 1 - Strongly Disagree, 2 - Disagree, 3 - Neutral, 4 - Agree and 5 - Strongly Agree

Sl. No.	Particulars	1	2	3	4	5
1	The academic plan given in advance helped me to plan my academic activities					✓
2	Current Syllabus adequately covers contemporary topics /global issues/emerging global and national trends in management					✓
3	The specified contact hours stated in syllabus is sufficient to complete the coverage of syllabus as per each course by the teachers					✓
4	Sufficient reference materials and books are available in the library for the topics mentioned in the syllabus					✓
5	The evaluation methods mentioned in the syllabus are sufficient for providing proper assessment					✓
6	Contents of the syllabus meets the expectations in terms of learning values, skills, knowledge, attitude, analytical abilities, applicability, relevance and practical orientation to real life situations.				✓	
7	Contents of the syllabus is relevant to my professional development in future					✓
8	The current syllabus tries to build the opportunities in terms of employability such as Jobs, Services and Entrepreneurial attitude amongst the students.					✓

Any suggestions:

*[Signature]*  
Name and Signature of Student

# SRI DHARMASTHALA MANJUNATHESHWARA COLLEGE (AUTONOMOUS)

UJIRE - 574 240



DAKSHINA KANNADA, KARNATAKA STATE

(Re-Accredited by NAAC at 'A' Grade with CGPA 3.61 out of 4)

Ph: 08256-236221, 236101(0), Fax: 236220

e-Mail: sdmcollege@rediffmail.com, sdmcollege@sdmcjire.in, Website: www.sdmcjire.in

## DEPARTMENT OF PHYSICS

## ALUMNI FEEDBACK

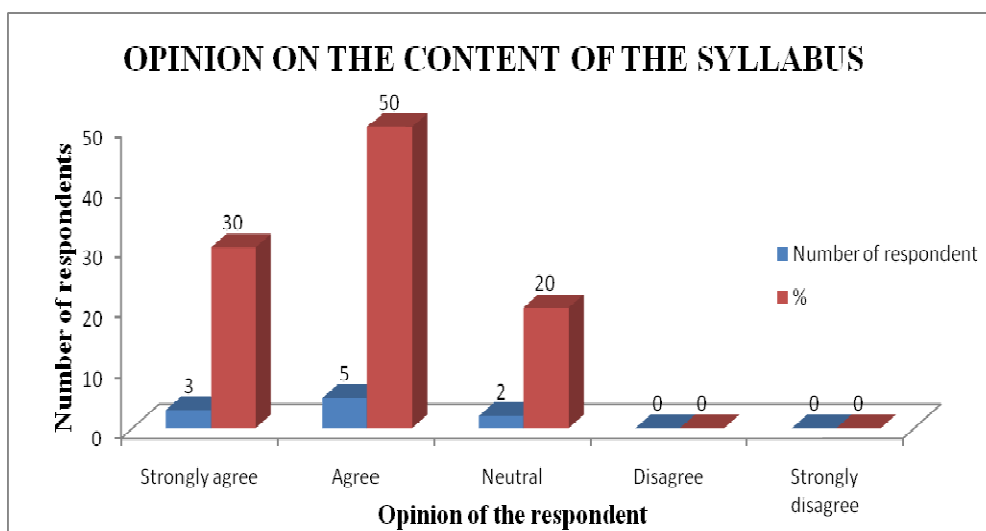
## ACADEMIC YEAR 2022-23

Number of  
respondents: 10

**Table 1: Opinion on content of the syllabus**

Opinion	Number of respondents	%
Strongly agree	3	30
Agree	5	50
Neutral	2	20
Disagree	0	0
Strongly disagree	0	0
<b>Total</b>	<b>10</b>	<b>100</b>

**Chart 1: Opinion on content of the syllabus**



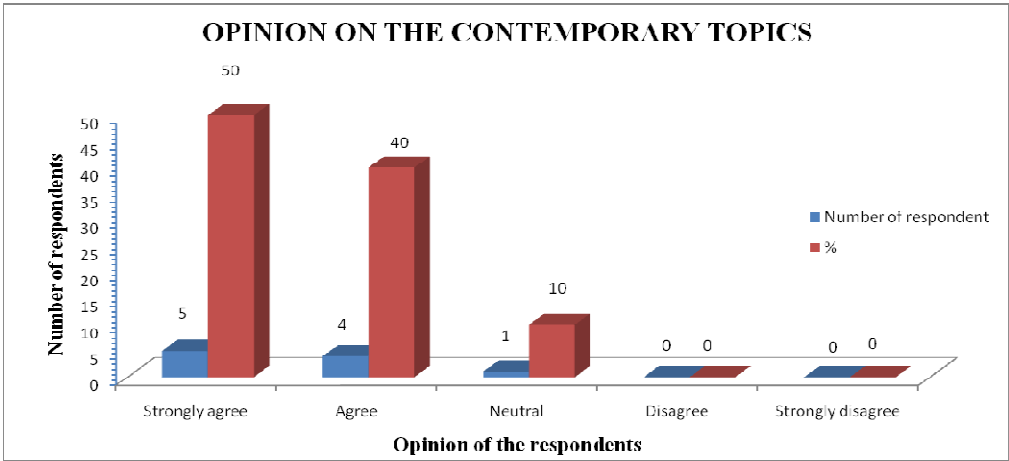
**Interpretation:** 30% of the respondents strongly agree and 50% agree that the contents of syllabus fulfill the need of the Industry, sufficient to bridge the gap between industry

standards/current,global  
scenarioandacademicsandenhancesknowledgeoffunctionalareasofmanagement. 20%respondents  
areneutral.

**Table2:Opinionaboutcontemporarytopicsinthesyllabus**

Opinion	Numberofrespondents	%
Stronglyagree	5	50
agree	4	40
Neutral	1	10
Disagree	0	0
Strongly Disagree	0	0
<b>Total</b>	<b>10</b>	<b>100%</b>

**Chart2:Opinion aboutcontemporarytopicsinthesyllabus**



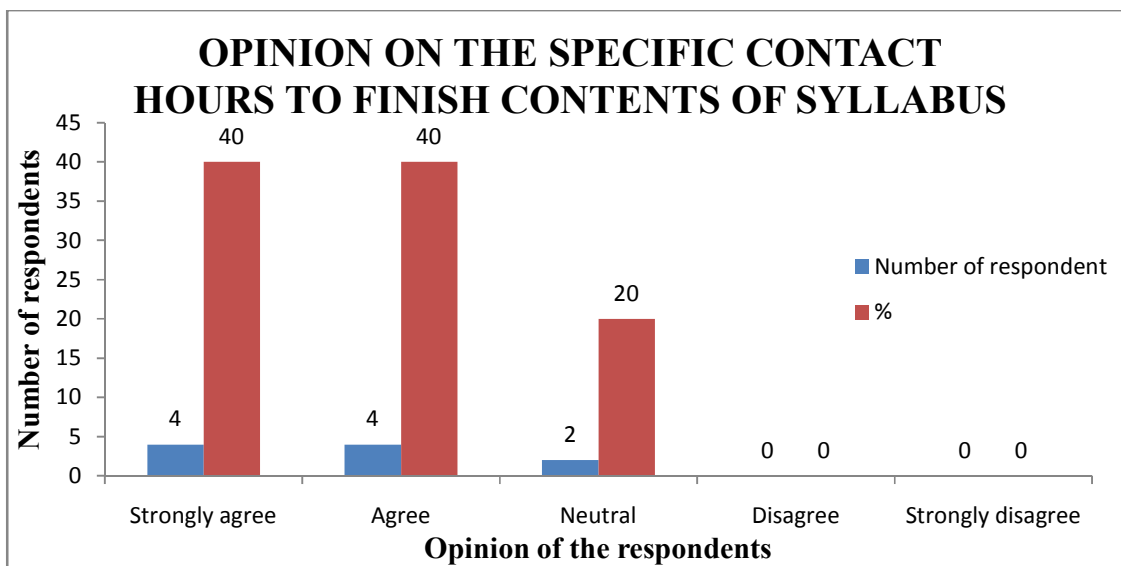
**Interpretation:**

**50% of respondents strongly agree and 40 % agree** that Current Syllabusadequately covers contemporary topics/global issues/emerging global and national trends inmanagement. 10%areneutral.

**Table3:Opinion oncontacthourstofinish thesyllabus**

Opinion	Numberofrespondents	%
Stronglyagree	4	40
agree	4	40
Neutral	2	20
Disagree	0	0
StronglyDisagree	0	0
<b>Total</b>	<b>10</b>	<b>100%</b>

**Chart3:Opinion oncontacthourstofinish thesyllabus**



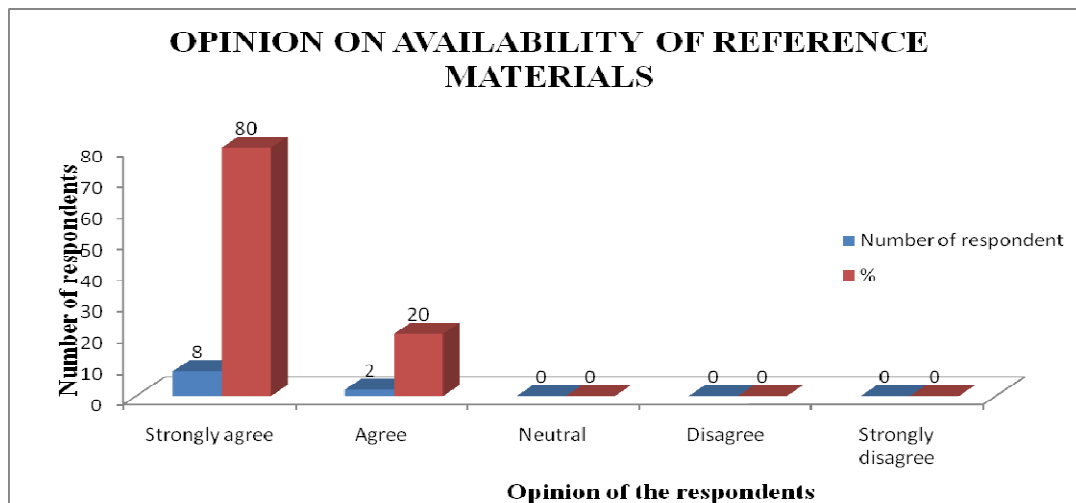
#### **Interpretation**

**40% of respondents strongly agree and 40% agree** that the specified contact hours stated insyllabus is sufficient to complete the coverage of syllabus as per each course by the teachers.20%respondentsareneutral.

**Table4:Opinionontheavailabilityofreferencematerials**

Opinion	Numberofrespondents	%
Stronglyagree	8	80
Agree	2	20
Neutral	0	0
Disagree	0	0
Strongly Disagree	0	0
<b>Total</b>	<b>10</b>	<b>100%</b>

**Chart4:Opinionontheavailabilityofreferencematerials**



#### **Interpretation**

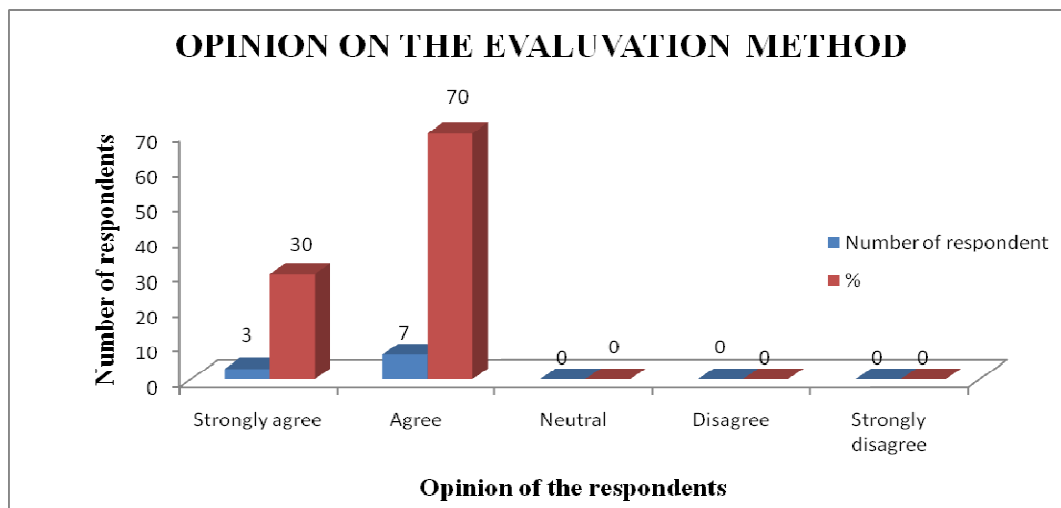
**80% of respondents strongly agree and 20% agree** that Sufficient reference materials and books are available in the library for the topics mentioned in the syllabus.



**Table5:Opinion onevaluationmethods**

Opinion	Numberofrespondents	%
Stronglyagree	3	30
Agree	7	70
Neutral	0	0
Disagree	0	0
Strongly Disagree	0	0
<b>Total</b>	<b>10</b>	<b>100%</b>

**Chart5:Opinion onevaluationmethods**



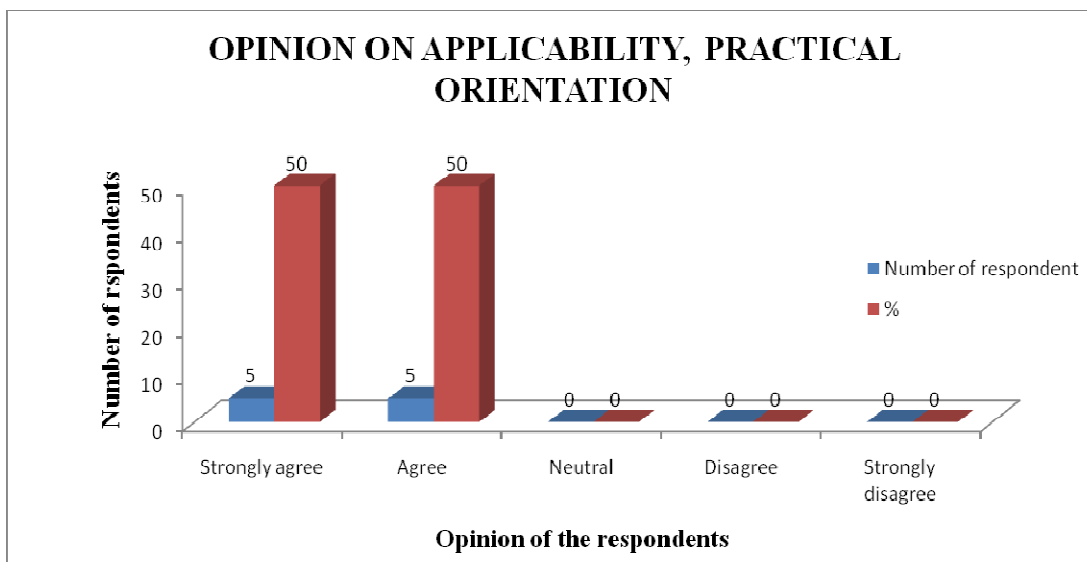
**Interpretation**

**30% of respondents strongly agree and 70% agree** that The evaluation methodsmentioned in the syllabus are sufficient for providing proper assessment.

**Table6:Opinion oncontentofthesyllabuswithregardto values,skills,attitude and practical orientation to real life situations**

Opinion	Numberofrespondents	%
Stronglyagree	5	50
Agree	5	50
Neutral	0	0
Disagree	0	0
Strongly Disagree	0	0
<b>Total</b>	<b>10</b>	<b>100%</b>

**Chart6:Opinion oncontentof thesyllabuswith regardtovalues andskills**



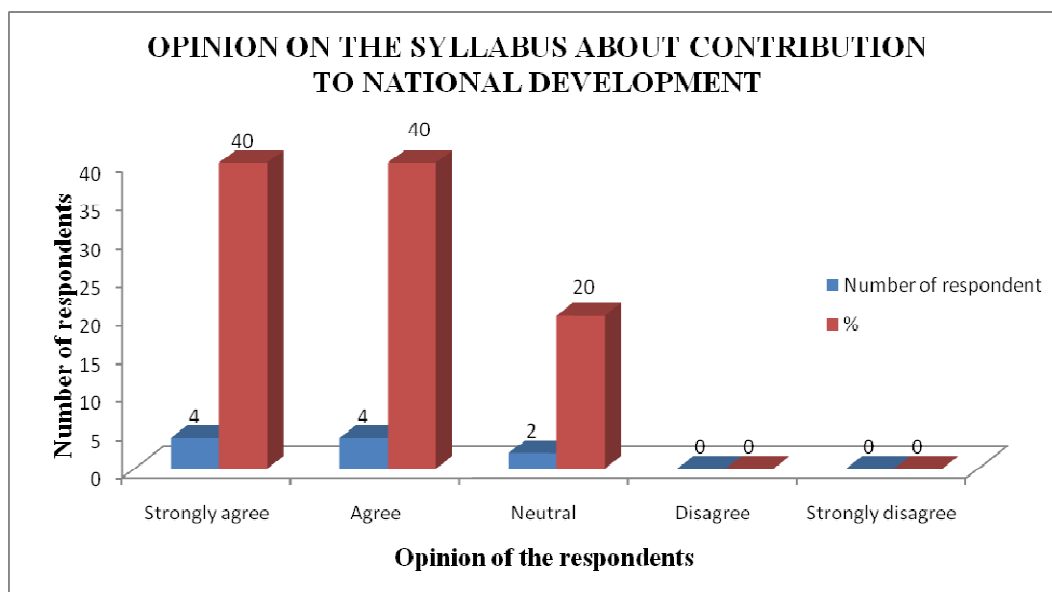
#### Interpretation

**50% of respondents strongly agree and 50 % agree**that contents of thesyllabus meets the expectations in terms of learning values, skills, knowledge, attitude,analyticalabilities,applicability,relevanceandpracticalorientationtoreallifesituations

**Table7:Opinion on content in the syllabus about National Development**

Opinion	Number of respondents	%
Strongly agree	4	40
Agree	4	40
Neutral	2	20
Disagree	0	0
Strongly Disagree	0	0
<b>Total</b>	<b>10</b>	<b>100%</b>

**Chart7:Opinion on content in the syllabus about National Development**



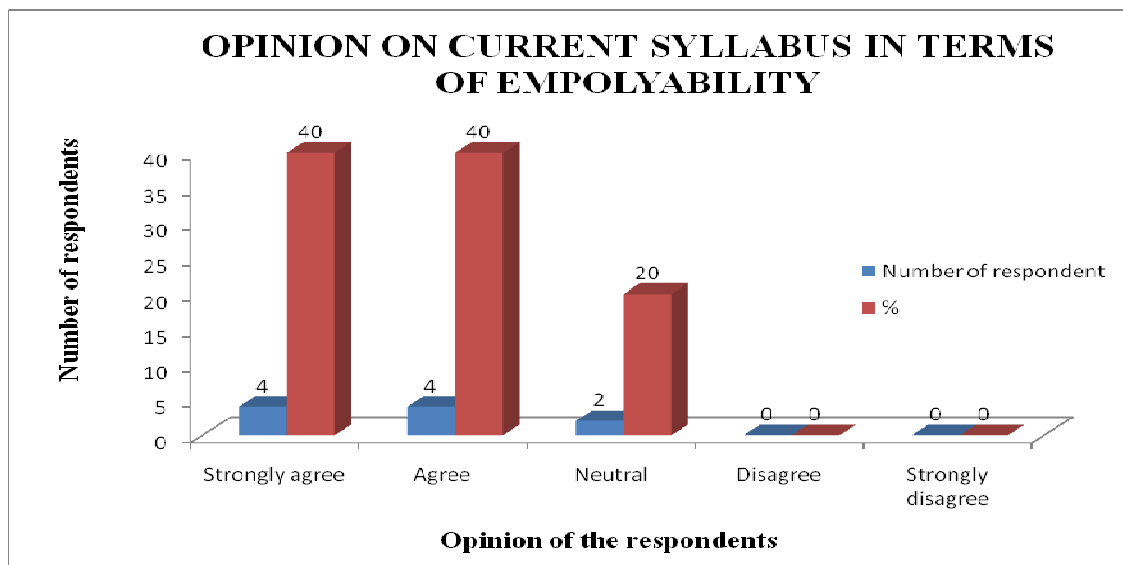
#### **Interpretation**

**40% of respondents strongly agree and 40% agree that** The course/subjects covers the aspects such as fundamental duties, national integration, peace, love and Communal harmony, Human rights, social security and sensitizing the students towards National Development. 20% are neutral.

**Table8:Opinionregardingopportunitiesforemployability**

Opinion	Numberofrespondents	%
Stronglyagree	4	40
Agree	4	40
Neutral	2	20
Disagree	0	0
Strongly Disagree	0	0
<b>Total</b>	10	100

**Chart8:Opinionregardingopportunitiesforemployability**



**Interpretation:**

**40%ofrespondentsstronglyagree** and **40%agreethatthecurrentsyllabustriestobuildtheopportunitiesintermsofemployabilitysuchasJobs,ServicesandEntrepreneurialattitudeamongst thestudents.20%respondentsareneutral.**

## MAJOR FINDINGS

It is found that nearly 90% of respondents strongly agree or agree with the statements given in the questionnaire

## MAJOR SUGGESTIONS

- Organize field visits or internships
- Add more practicals on electronics

**SRI DHARMASTHALA MANJUNATHESHWARA COLLEGE (AUTONOMOUS)**  
**UJIRE - 574 240**  
DAKSHINA KANNADA, KARNATAKA STATE  
(Re-Accredited by NAAC with 'A++' Grade)  
Ph: 08256-236221, 236101(O), Fax: 236220  
e-Mail: sdmcollege@rediffmail.com, sdmcollege@sdmujire.in, Website: www.sdmujire.in

**ALUMNI FEEDBACK FOR DESIGN AND REVIEW OF SYLLABUS**

Name of the Respondent: *Shree Vidhya* Contact Number: *9449793048*  
Year in which degree is completed: *2022*  
Email Id: *Shreevidhya234@gmail.com*  
(Please tick on a the scale with the appropriate response)  
Scale: 1 – Strongly Disagree, 2 – Disagree, 3 – Neutral, 4 – Agree and 5 – Strongly Agree

Sl. No	Particulars	1	2	3	4	5
1	The contents of syllabus fulfill the need of the Industry , sufficient to bridge the gap between industry standards/current global scenario and academics and enhances knowledge of functional areas of management				✓	
2	Current Syllabus adequately covers contemporary topics/global issues/emerging global and national trends in management				✓	
3	The specified contact hours stated in syllabus is sufficient to complete the coverage of syllabus as per each course by the teachers			✓		
4	Sufficient reference materials and books are available in the library for the topics mentioned in the syllabus				✓	
5	The evaluation methods mentioned in the syllabus are sufficient for providing proper assessment				✓	
6	Contents of the syllabus meets the expectations in terms of learning values, skills, knowledge, attitude, analytical abilities, applicability, relevance and practical orientation to real life situations.				✓	
7	The course/subjects covers the aspects such as fundamental duties, national integration, peace, love and Communal harmony, Human rights, social security and sensitising the students towards National Development				✓	
8	The current syllabus tries to build the opportunities in terms of employability such as Jobs, Services and Entrepreneurial attitude amongst the students.				✓	

Any suggestions: *organize field visit or internships.*

Name and Signature of Alumni  
*Shree Vidhya*  
*Svidhya*



**SRI DHARMASTHALA MANJUNATHESHWARA COLLEGE (AUTONOMOUS)**  
**UJIRE - 574 240**



DAKSHINA KANNADA, KARNATAKA STATE  
(Re-Accredited by NAAC with 'A++' Grade)  
Ph: 08256-236221, 236101(0), Fax: 236220

e-Mail:sdmcollege@rediffmail.com, sdmcollege@sdmcujire.in, Website: www.sdmcujire.in

**ALUMNI FEEDBACK FOR DESIGN AND REVIEW OF SYLLABUS**

Name of the Respondent: *Deepika PR*

Contact Number: *8618 334534*

Year in which degree is completed: *2022*

Email Id: *raguramshety175@gmail.com*

(Please tick on a the scale with the appropriate response)

Scale: 1 – Strongly Disagree, 2 – Disagree, 3 – Neutral, 4 – Agree and 5 – Strongly Agree

Sl. No	Particulars	1	2	3	4	5
1	The contents of syllabus fulfill the need of the Industry , sufficient to bridge the gap between industry standards/current global scenario and academics and enhances knowledge of functional areas of management				✓	
2	Current Syllabus adequately covers contemporary topics/global issues/emerging global and national trends in management				✓	
3	The specified contact hours stated in syllabus is sufficient to complete the coverage of syllabus as per each course by the teachers				✓	
4	Sufficient reference materials and books are available in the library for the topics mentioned in the syllabus					✓
5	The evaluation methods mentioned in the syllabus are sufficient for providing proper assessment				✓	
6	Contents of the syllabus meets the expectations in terms of learning values, skills, knowledge, attitude, analytical abilities, applicability, relevance and practical orientation to real life situations.				✓	
7	The course/subjects covers the aspects such as fundamental duties, national integration, peace, love and Communal harmony, Human rights, social security and sensitising the students towards National Development				✓	
8	The current syllabus tries to build the opportunities in terms of employability such as Jobs, Services and Entrepreneurial attitude amongst the students.				✓	

Any suggestions:

*Deepika (Deepika)*  
Name and Signature of Alumni



# SRI DHARMASTHALA MANJUNATHESHWARA COLLEGE (AUTONOMOUS)

UJIRE - 574 240



DAKSHINA KANNADA, KARNATAKA STATE

(Re-Accredited by NAAC with 'A++' Grade)

Ph: 08256-236221, 236101(0), Fax: 236220

e-Mail: sdmcollege@rediffmail.com, sdmcollege@sdmcujire.in, Website: www.sdmcujire.in

## ALUMNI FEEDBACK FOR DESIGN AND REVIEW OF SYLLABUS

Name of the Respondent: *Sunath Kumar. M*

Contact Number: *9686748981*

Year in which degree is completed: *2022*

Email Id:

(Please tick on a the scale with the appropriate response)

Scale: 1 – Strongly Disagree, 2 – Disagree, 3 – Neutral, 4 – Agree and 5 – Strongly Agree

Sl. No	Particulars	1	2	3	4	5
1	The contents of syllabus fulfill the need of the Industry , sufficient to bridge the gap between industry standards/current global scenario and academics and enhances knowledge of functional areas of management			✓		
2	Current Syllabus adequately covers contemporary topics/global issues/emerging global and national trends in management					✓
3	The specified contact hours stated in syllabus is sufficient to complete the coverage of syllabus as per each course by the teachers					✓
4	Sufficient reference materials and books are available in the library for the topics mentioned in the syllabus					✓
5	The evaluation methods mentioned in the syllabus are sufficient for providing proper assessment				✓	
6	Contents of the syllabus meets the expectations in terms of learning values, skills, knowledge, attitude, analytical abilities, applicability, relevance and practical orientation to real life situations.				✓	
7	The course/subjects covers the aspects such as fundamental duties, national integration, peace, love and Communal harmony, Human rights, social security and sensitising the students towards National Development			✓		
8	The current syllabus tries to build the opportunities in terms of employability such as Jobs, Services and Entrepreneurial attitude amongst the students.				✓	

Any suggestions: *Add more practicals on electronics.*

*Sunath Kumar*  
Name and Signature of Alumni



# SRI DHARMASTHALA MANJUNATHESHWARA COLLEGE (AUTONOMOUS)

UJIRE - 574 240



DAKSHINA KANNADA, KARNATAKA STATE

(Re-Accredited by NAAC with 'A++' Grade)

Ph: 08256-236221, 236101(0), Fax: 236220

e-Mail: sdmcollege@rediffmail.com, sdmcollege@sdmcujire.in, Website: www.sdmcujire.in

## ALUMNI FEEDBACK FOR DESIGN AND REVIEW OF SYLLABUS

Name of the Respondent: Prakrathi

Contact Number: 81974698

Year in which degree is completed: 2022

Email Id: Prakrathishetty@gmail.com

(Please tick on a the scale with the appropriate response)

Scale: 1 - Strongly Disagree, 2 - Disagree, 3 - Neutral, 4 - Agree and 5 - Strongly Agree

Sl. No	Particulars	1	2	3	4	5
1	The contents of syllabus fulfill the need of the Industry , sufficient to bridge the gap between industry standards/current global scenario and academics and enhances knowledge of functional areas of management				✓	
2	Current Syllabus adequately covers contemporary topics/global issues/emerging global and national trends in management				✓	
3	The specified contact hours stated in syllabus is sufficient to complete the coverage of syllabus as per each course by the teachers				✓	
4	Sufficient reference materials and books are available in the library for the topics mentioned in the syllabus					✓
5	The evaluation methods mentioned in the syllabus are sufficient for providing proper assessment				✓	
6	Contents of the syllabus meets the expectations in terms of learning values, skills, knowledge, attitude, analytical abilities, applicability, relevance and practical orientation to real life situations.				✓	
7	The course/subjects covers the aspects such as fundamental duties, national integration, peace, love and Communal harmony, Human rights, social security and sensitising the students towards National Development				✓	
8	The current syllabus tries to build the opportunities in terms of employability such as Jobs, Services and Entrepreneurial attitude amongst the students.				✓	

Any suggestions:

Prakrathi Prakrathi  
Name and Signature of Alumni



**SRI DHARMASTHALA MANJUNATHESHWARA COLLEGE (AUTONOMOUS)**  
**UJIRE - 574 240**



DAKSHINA KANNADA, KARNATAKA STATE  
(Re-Accredited by NAAC with 'A++' Grade)  
Ph: 08256-236221, 236101(0), Fax: 236220

e-Mail: sdmcollege@rediffmail.com, sdmcollege@sdmcujire.in, Website: www.sdmcujire.in

**ALUMNI FEEDBACK FOR DESIGN AND REVIEW OF SYLLABUS**

Name of the Respondent: Pratheekha A

Contact Number: 8197195034

Year in which degree is completed: 2022

Email Id: pratheekha8197@gmail.com

(Please tick on a the scale with the appropriate response)

Scale: 1 – Strongly Disagree, 2 – Disagree, 3 – Neutral, 4 – Agree and 5 – Strongly Agree

Sl. No	Particulars	1	2	3	4	5
1	The contents of syllabus fulfill the need of the Industry , sufficient to bridge the gap between industry standards/current global scenario and academics and enhances knowledge of functional areas of management				✓	
2	Current Syllabus adequately covers contemporary topics/global issues/emerging global and national trends in management					✓
3	The specified contact hours stated in syllabus is sufficient to complete the coverage of syllabus as per each course by the teachers					✓
4	Sufficient reference materials and books are available in the library for the topics mentioned in the syllabus					✓
5	The evaluation methods mentioned in the syllabus are sufficient for providing proper assessment				✓	
6	Contents of the syllabus meets the expectations in terms of learning values, skills, knowledge, attitude, analytical abilities, applicability, relevance and practical orientation to real life situations.					✓
7	The course/subjects covers the aspects such as fundamental duties, national integration, peace, love and Communal harmony, Human rights, social security and sensitising the students towards National Development					✓
8	The current syllabus tries to build the opportunities in terms of employability such as Jobs, Services and Entrepreneurial attitude amongst the students.					✓

Any suggestions:

Pratheekha A  
Name and Signature of Alumni

# SRI DHARMASTHALA MANJUNATHESHWARA COLLEGE (AUTONOMOUS)

UJIRE – 574 240



DAKSHINA KANNADA, KARNATAKA STATE

(Re-Accredited by NAAC at 'A' Grade with CGPA 3.61 out of 4)

Ph: 08256-236221, 236101(0), Fax: 236220

e-Mail: sdmcollege@rediffmail.com, sdmcollege@sdmujire.in, Website: www.sdmujire.in

## DEPARTMENT OF PHYSICS

## FACULTY FEEDBACK

## ACADEMIC YEAR 2022-23

Number of respondents:10

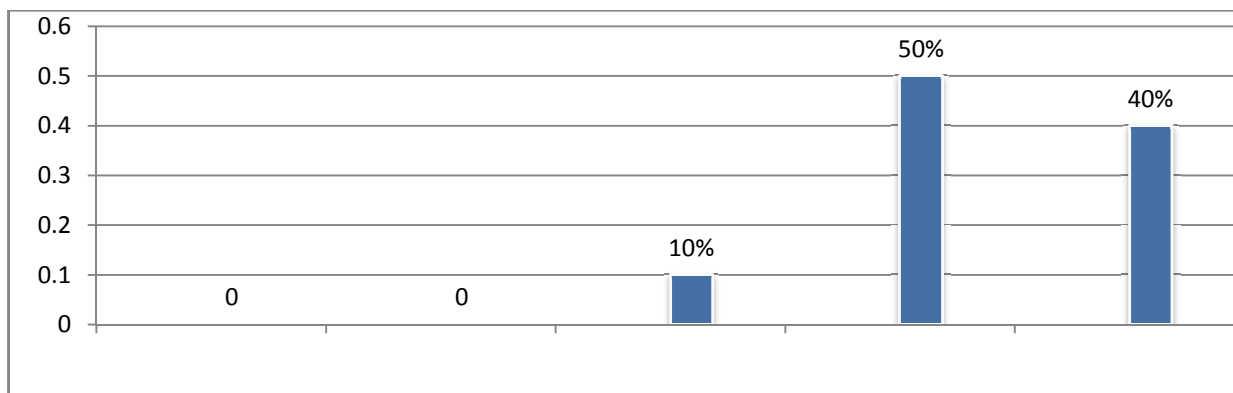
Table 1: Opinion on relevancy of contents of the syllabus

Table 1: Opinion on relevancy of contents of the syllabus

Opinion	Number of respondents	%
Strongly disagree	0	0
Disagree	0	0
Neutral	1	10%
Agree	5	50%
Strongly Agree	4	40%
<b>Total</b>	<b>10</b>	<b>100%</b>

Strongly disagree	0
Disagree	0
Neutral	10%
Agree	50%
Strongly Agree	40%

**Chart 1: Opinion on relevancy of contents of the syllabus**



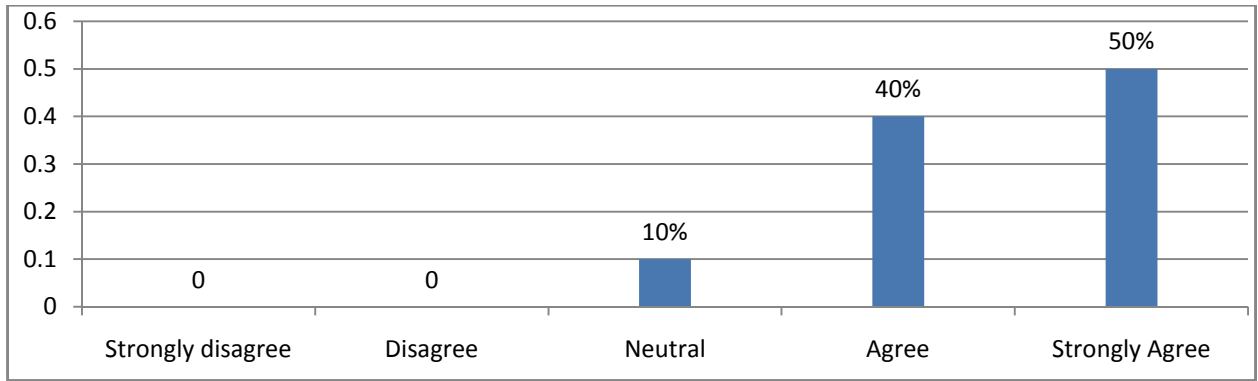
Interpretation:

40% of Respondents Strongly, 50% Agree and 10% Neutral that syllabus has a good balance between theory and practical aspects.

**Table 2: Opinion about link between theory and practical contents in the syllabus**

Opinion	Number of respondents	%
Strongly disagree	0	0
Disagree	0	0
Neutral	1	10%
Agree	4	40%
Strongly Agree	5	50%
Total	5	100%

**Chart 2: Opinion about link between theory and practical contents in the syllabus**



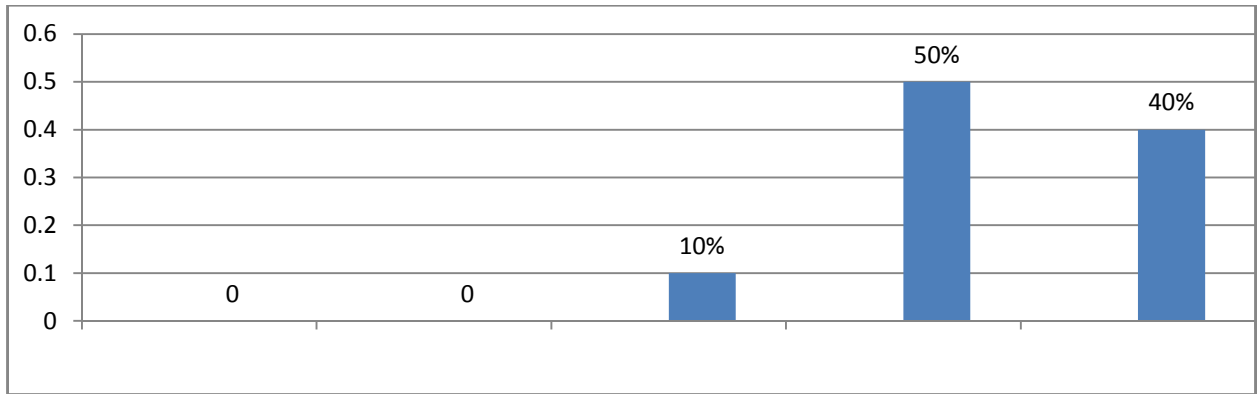
Interpretation:

50% of Respondents Strongly, 40% Agree and 10% Neutral that Syllabus has a good balance between theory and practical aspects.

**Table 3: Opinion about comprehensive knowledge and perspective in the subject area**

Opinion	Number of respondents	%
Strongly disagree	0	0
Disagree	0	0
Neutral	1	10%
Agree	5	50%
Strongly Agree	4	40%
<b>Total</b>	<b>10</b>	<b>100%</b>

**Chart 3: Opinion about comprehensive knowledge and perspective in the subject area**



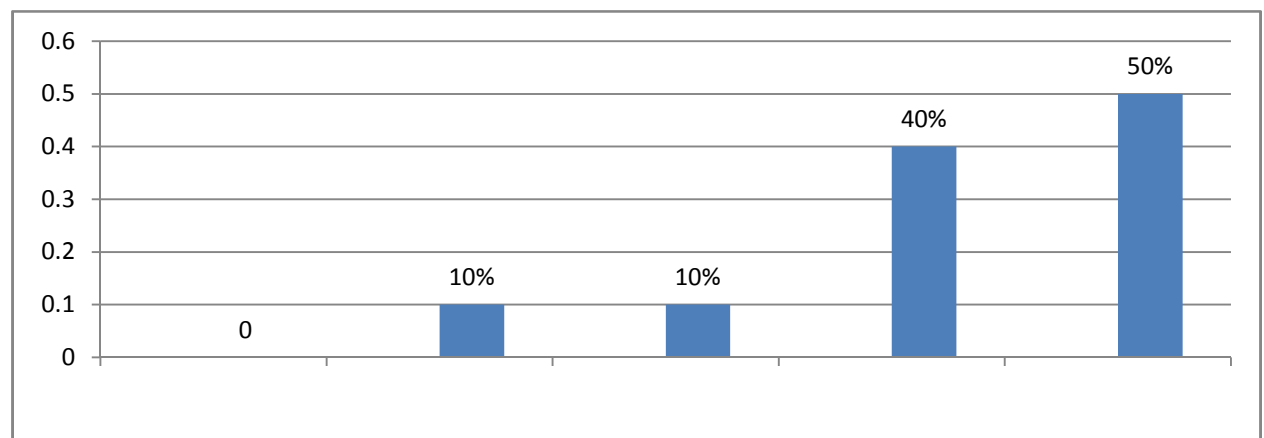
Interpretation:

40% of Respondents Strongly, 50% Agree and 10% Neutral that Syllabus provides comprehensive knowledge and perspective in the subject area.

**Table 4: Opinion about reference materials provided**

<b>Opinion</b>	<b>Number of respondents</b>	<b>%</b>
Strongly disagree	0	0
Disagree	1	0
Neutral	1	0
Agree	4	40%
Strongly Agree	5	50%
<b>Total</b>	<b>10</b>	<b>100%</b>

**Chart 4: Opinion about reference materials provided**

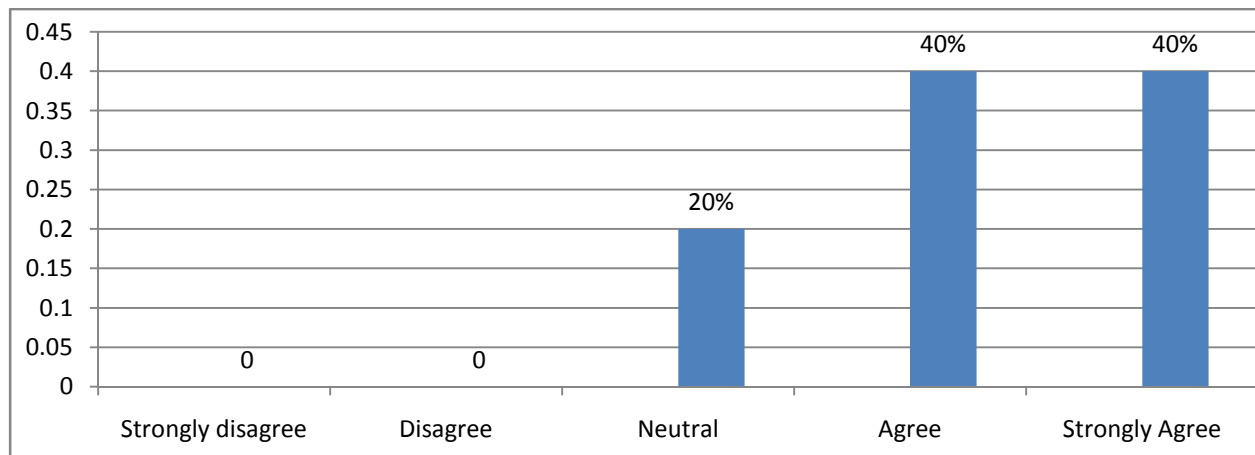


Interpretation:

50% of respondents strongly agree , 40% agree and 10% disagree thatBooks prescribed/ listed as reference materials are appropriate, relevant and updated. 10% are neutral.

**Table 5: Opinion about contemporary topics in the Syllabus**

<b>Opinion</b>	<b>Number of respondents</b>	<b>%</b>
Strongly disagree	0	0
Disagree	0	0
Neutral	2	20%
Agree	4	40%
Strongly Agree	4	40%
<b>Total</b>	<b>10</b>	<b>100%</b>

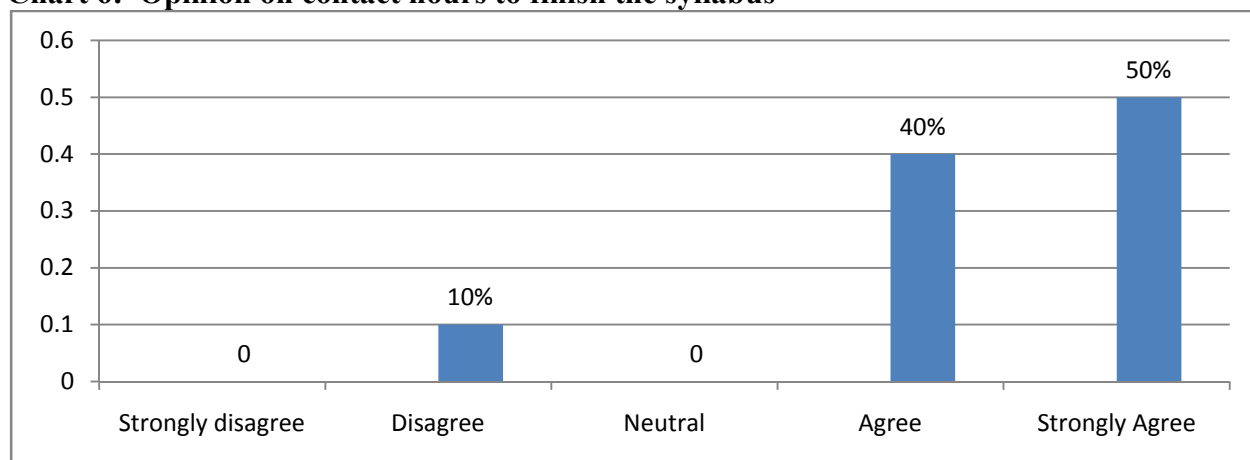
**Chart 5: Opinion about contemporary topics in the Syllabus**

Interpretation: 40% of respondents strongly agree and 40% agree that Current Syllabus adequately covers contemporary topics /global issues/emerging global and national trends in management. 20% are neutral.

**Table 6: Opinion on contact hours to finish the syllabus**

<b>Opinion</b>	<b>Number of respondents</b>	<b>%</b>
Strongly disagree	0	0
Disagree	1	10%
Neutral	0	0
Agree	4	40%
Strongly Agree	5	50%
<b>Total</b>	<b>10</b>	<b>100%</b>

**Chart 6: Opinion on contact hours to finish the syllabus**



Interpretation:

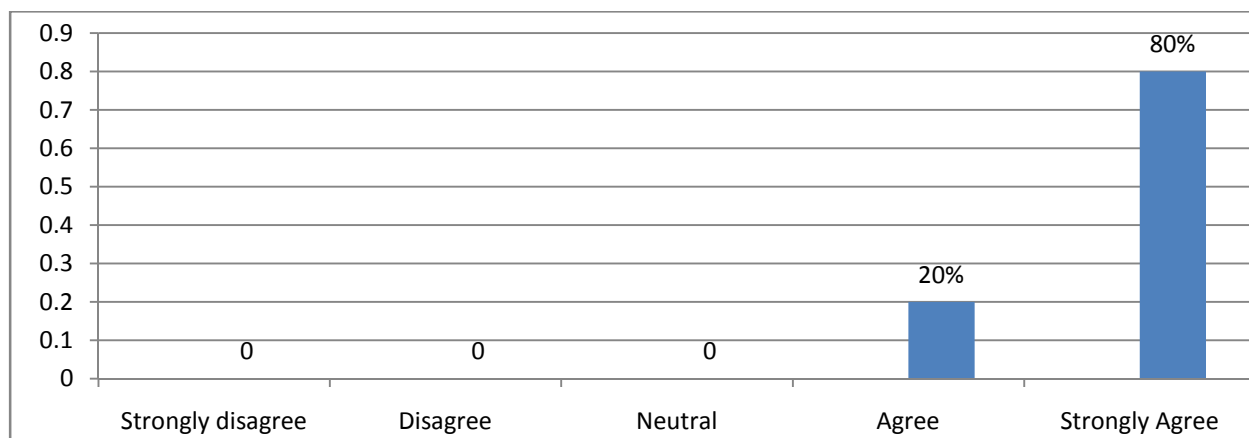
50 % of respondents strongly agree, 40% agree and 10% disagree that The specified contact hours stated in syllabus is sufficient to complete the syllabus.

**Table 7: Opinion about availability of reference materials in the library**

Opinion	Number of respondents	%
Strongly disagree	0	0
Disagree	0	0
Neutral	0	0
Agree	2	20%
Strongly Agree	8	80%
Total	10	100%

**Chart 7 :Opinion about availability of reference materials in the library**





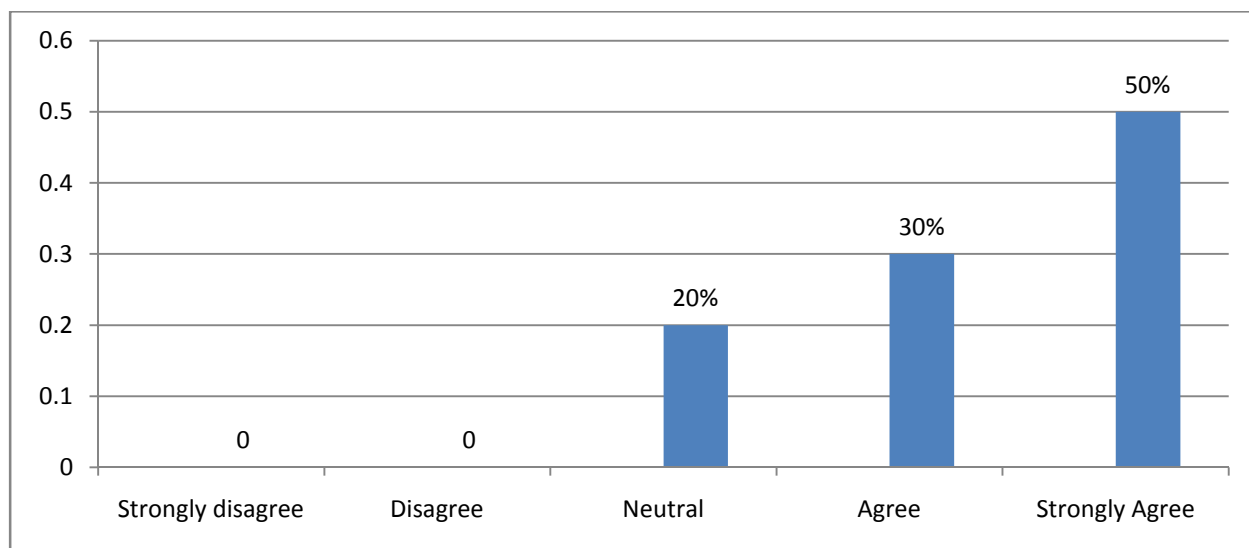
Interpretation:

80 % of respondents strongly agree and 20% agree that Sufficient reference materials and books are available in the library for the topics mentioned in the syllabus.

**Table 8 :Opinion on evaluation methods**

Opinion	Number of respondents	%
Strongly disagree	0	0
Disagree	0	0
Neutral	2	20%
Agree	3	30%
Strongly Agree	5	50%
<b>Total</b>	<b>10</b>	<b>100%</b>

**Chart 8 :Opinion on evaluation methods**



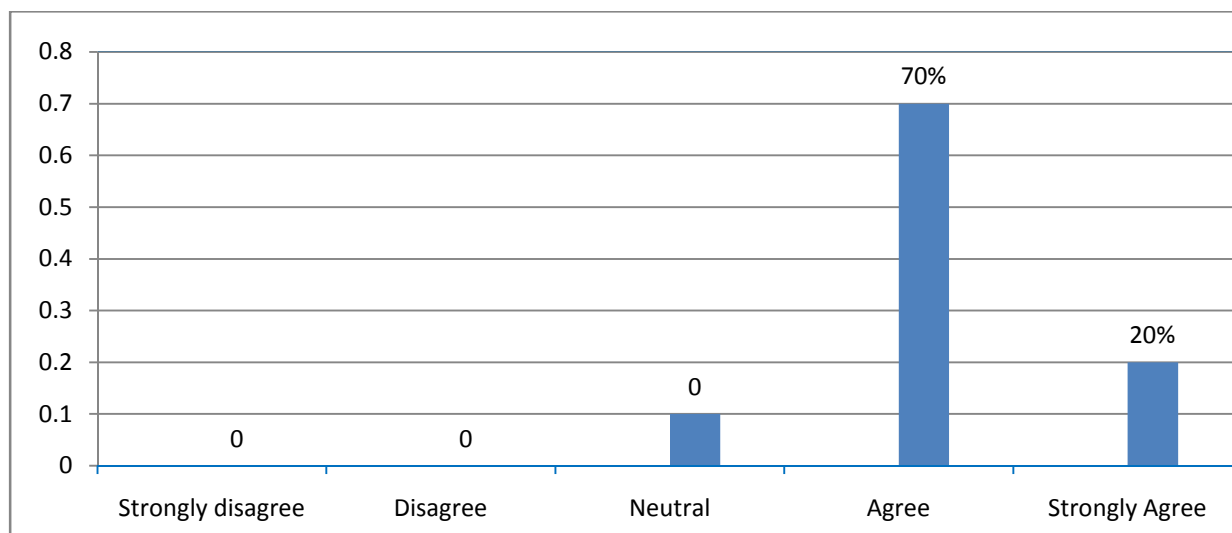
Interpretation :

50% of respondents strongly agree and 30% agree that the evaluation methods mentioned in the syllabus are sufficient for providing proper assessment. 20% respondents are neutral.

**Table 9: Opinion on content of the syllabus with regard to values and skills**

Opinion	Number of respondents	%
Strongly disagree	0	0
Disagree	0	0
Neutral	1	10%
Agree	7	70%
Strongly Agree	2	20%
<b>Total</b>	<b>10</b>	<b>100%</b>

**Chart 9: Opinion on content of the syllabus with regard to values and skills**



Interpretation:

20% of respondents strongly agree and 70% agree that Contents of the syllabus meets the expectations of the students in terms of learning values, skills, knowledge, attitude, analytical abilities, applicability, relevance and practical orientation to real life situations. 10% are neutral.

### MAJOR FINDINGS

**It is found that nearly 90% of respondents strongly agree or agree with the statements given in the questionnaire**

### MAJOR SUGGESTIONS

- Topics related to measurement of intensity of sound can be added to the syllabus
- Addition of research and software related topics
- Addition of Some theory part of Anderson's, De-Sauty bridges and Ballistic Galvanometer

**SRI DHARMASTHALA MANJUNATHESHWARA COLLEGE (AUTONOMOUS)**  
**UJIRE - 574 240**



DAKSHINA KANNADA, KARNATAKA STATE  
(Re-Accredited by NAAC at 'A' Grade with CGPA 3.61 out of 4)  
Ph: 08256-236221, 236101(O), Fax: 236220  
e-Mail: sdmcollege@rediffmail.com, sdmcollege@sdmcujire.in, Website: www.sdmcujire.in

**FACULTY FEEDBACK FOR DESIGN AND REVIEW OF  
SYLLABUS**

Please tick on a the scale with the appropriate response

**Scale:** 1 – Strongly Disagree, 2 – Disagree, 3 – Neutral, 4 – Agree and 5 – Strongly Agree

Sl.N o.	Particulars	1	2	3	4	5
1	Contents of syllabus are relevant to the course					✓
2	Syllabus has a good balance between theory and practical aspects				✓	
3	Syllabus provides comprehensive knowledge and perspective in the subject area					✓
4	Books prescribed/ listed as reference materials are appropriate, relevant and updated					✓
5	Current Syllabus adequately covers contemporary topics /global issues/emerging global and national trends in management					✓
6	The specified contact hours stated in syllabus is sufficient to complete the syllabus				✓	
7	Sufficient reference materials and books are available in the library for the topics mentioned in the syllabus				✓	
8	The evaluation methods mentioned in the syllabus are sufficient for providing proper assessment				✓	
9	Contents of the syllabus meets the expectations of the students in terms of learning values, skills, knowledge, attitude, analytical abilities, applicability, relevance and practical orientation to real life situations.				✓	

Any suggestions:

*J. Jayarama. A.*  
5/11/2022

(Dr. Jayarama. A.)  
Name and Signature of Faculty

# SRI DHARMASTHALA MANJUNATHESHWARA COLLEGE (AUTONOMOUS)



UJIRE - 574 240

DAKSHINA KANNADA, KARNATAKA STATE

(Re-Accredited by NAAC at 'A' Grade with CGPA 3.61 out of 4)

Ph: 08256-236221, 236101(0), Fax: 236220

e-Mail: sdmcollege@rediffmail.com, sdmcollege@sdmcollege.in, Website: www.sdmcollege.in


## FACULTY FEEDBACK FOR DESIGN AND REVIEW OF SYLLABUS

Please tick on a the scale with the appropriate response

Scale: 1 – Strongly Disagree, 2 – Disagree, 3 – Neutral, 4 – Agree and 5 – Strongly Agree

Sl.N o.	Particulars	1	2	3	4	5
1	Contents of syllabus are relevant to the course					✓
2	Syllabus has a good balance between theory and practical aspects					✓
3	Syllabus provides comprehensive knowledge and perspective in the subject area				✓	
4	Books prescribed/ listed as reference materials are appropriate, relevant and updated				✓	
5	Current Syllabus adequately covers contemporary topics /global issues/emerging global and national trends in management					✓
6	The specified contact hours stated in syllabus is sufficient to complete the syllabus					✓
7	Sufficient reference materials and books are available in the library for the topics mentioned in the syllabus					✓
8	The evaluation methods mentioned in the syllabus are sufficient for providing proper assessment					✓
9	Contents of the syllabus meets the expectations of the students in terms of learning values, skills, knowledge, attitude, analytical abilities, applicability, relevance and practical orientation to real life situations.					✓

Any suggestions: \_\_\_\_\_

  
Name and Signature of Faculty  
Shivaprasad K. S.

# SRI DHARMASTHALA MANJUNATHESHWARA COLLEGE (AUTONOMOUS)



UJIRE - 574 240

DAKSHINA KANNADA, KARNATAKA STATE

(Re-Accredited by NAAC at 'A' Grade with CGPA 3.61 out of 4)

Ph: 08256-236221, 236101(0), Fax: 236220

e-Mail: sdmcollege@rediffmail.com, sdmcollege@sdmcujire.in, Website: www.sdmcujire.in

## FACULTY FEEDBACK FOR DESIGN AND REVIEW OF SYLLABUS

Please tick on a the scale with the appropriate response

Scale: 1 – Strongly Disagree, 2 – Disagree, 3 – Neutral, 4 – Agree and 5 – Strongly Agree

Sl.N o.	Particulars	1	2	3	4	5
1	Contents of syllabus are relevant to the course					✓
2	Syllabus has a good balance between theory and practical aspects				✓	
3	Syllabus provides comprehensive knowledge and perspective in the subject area				✓	
4	Books prescribed/ listed as reference materials are appropriate, relevant and updated					✓
5	Current Syllabus adequately covers contemporary topics /global issues/emerging global and national trends in management				✓	
6	The specified contact hours stated in syllabus is sufficient to complete the syllabus					✓
7	Sufficient reference materials and books are available in the library for the topics mentioned in the syllabus					✓
8	The evaluation methods mentioned in the syllabus are sufficient for providing proper assessment					✓
9	Contents of the syllabus meets the expectations of the students in terms of learning values, skills, knowledge, attitude, analytical abilities, applicability, relevance and practical orientation to real life situations.				✓	

Any suggestions:

Name and Signature of Faculty

Dr. Rajesh Kumar P.



# SRI DHARMASTHALA MANJUNATHESHWARA COLLEGE (AUTONOMOUS)



UJIRE - 574 240

DAKSHINA KANNADA, KARNATAKA STATE

(Re-Accredited by NAAC at 'A' Grade with CGPA 3.61 out of 4)

Ph: 08256-236221, 236101(0), Fax: 236220

e-Mail: sdmcollege@rediffmail.com, sdmcollege@sdmcujire.in, Website: www.sdmcujire.in

## FACULTY FEEDBACK FOR DESIGN AND REVIEW OF SYLLABUS

Please tick on a the scale with the appropriate response

Scale: 1 - Strongly Disagree, 2 - Disagree, 3 - Neutral, 4 - Agree and 5 - Strongly Agree

S.No.	Particulars	1	2	3	4	5
1	Contents of syllabus are relevant to the course					✓
2	Syllabus has a good balance between theory and practical aspects					✓
3	Syllabus provides comprehensive knowledge and perspective in the subject area					✓
4	Books prescribed/ listed as reference materials are appropriate, relevant and updated					✓
5	Current Syllabus adequately covers contemporary topics /global issues/emerging global and national trends in management				✓	
6	The specified contact hours stated in syllabus is sufficient to complete the syllabus					✓
7	Sufficient reference materials and books are available in the library for the topics mentioned in the syllabus					✓
8	The evaluation methods mentioned in the syllabus are sufficient for providing proper assessment					✓
9	Contents of the syllabus meets the expectations of the students in terms of learning values, skills, knowledge, attitude, analytical abilities, applicability, relevance and practical orientation to real life situations.					✓

Any suggestions: -

  
HARSHITH  
Name and Signature of Faculty

# SRI DHARMASTHALA MANJUNATHESHWARA COLLEGE (AUTONOMOUS)



UJIRE - 574 240

DAKSHINA KANNADA, KARNATAKA STATE

(Re-Accredited by NAAC at 'A' Grade with CGPA 3.61 out of 4)

Ph: 08256-236221, 236101(0); Fax: 236220

e-Mail: sdmcollege@rediffmail.com, sdmcollege@sdmcollege.in, Website: www.sdmcollege.in

## FACULTY FEEDBACK FOR DESIGN AND REVIEW OF

### SYLLABUS

Please tick on a the scale with the appropriate response

Scale: 1 – Strongly Disagree, 2 – Disagree, 3 – Neutral, 4 – Agree and 5 – Strongly Agree

Sl.N o.	Particulars	1	2	3	4	5
1	Contents of syllabus are relevant to the course				✓	
2	Syllabus has a good balance between theory and practical aspects				✓	
3	Syllabus provides comprehensive knowledge and perspective in the subject area					✓
4	Books prescribed/ listed as reference materials are appropriate, relevant and updated		✓			
5	Current Syllabus adequately covers contemporary topics /global issues/emerging global and national trends in management					✓
6	The specified contact hours stated in syllabus is sufficient to complete the syllabus		✓			
7	Sufficient reference materials and books are available in the library for the topics mentioned in the syllabus				✓	
8	The evaluation methods mentioned in the syllabus are sufficient for providing proper assessment				✓	
9	Contents of the syllabus meets the expectations of the students in terms of learning values, skills, knowledge, attitude, analytical abilities, applicability, relevance and practical orientation to real life situations.				✓	

Any suggestions:

Name and Signature of Faculty

CHAITRA C



# SRI DHARMASTHALA MANJUNATHESHWARA COLLEGE (AUTONOMOUS)

UJIRE - 574 240

DAKSHINA KANNADA, KARNATAKA STATE

(Re-Accredited by NAAC at 'A' Grade with CGPA 3.61 out of 4)

Ph: 08256-236221, 236101(0), Fax: 236220

e-Mail: sdmcollege@rediffmail.com, sdmcollege@sdmcujire.in, Website: www.sdmcujire.in

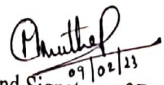
## FACULTY FEEDBACK FOR DESIGN AND REVIEW OF SYLLABUS

Please tick on a the scale with the appropriate response

Scale: 1 – Strongly Disagree, 2 – Disagree, 3 – Neutral, 4 – Agree and 5 – Strongly Agree

Sl.No.	Particulars	1	2	3	4	5
1	Contents of syllabus are relevant to the course				✓	
2	Syllabus has a good balance between theory and practical aspects					✓
3	Syllabus provides comprehensive knowledge and perspective in the subject area				✓	
4	Books prescribed/ listed as reference materials are appropriate, relevant and updated					✓
5	Current Syllabus adequately covers contemporary topics /global issues/emerging global and national trends in management					
6	The specified contact hours stated in syllabus is sufficient to complete the syllabus				✓	
7	Sufficient reference materials and books are available in the library for the topics mentioned in the syllabus					✓
8	The evaluation methods mentioned in the syllabus are sufficient for providing proper assessment					✓
9	Contents of the syllabus meets the expectations of the students in terms of learning values, skills, knowledge, attitude, analytical abilities, applicability, relevance and practical orientation to real life situations.				✓	

Any suggestions:

  
Name and Signature of Faculty  
[MINUTHA . P.]

# SRI DHARMASTHALA MANJUNATHESHWARA COLLEGE (AUTONOMOUS)



UJIRE - 574 240

DAKSHINA KANNADA, KARNATAKA STATE

(Re-Accredited by NAAC at 'A' Grade with CGPA 3.61 out of 4)

Ph: 08256-236221, 236101(O), Fax: 236220

e-Mail: edmccollege@rediffmail.com, edmccollege@sdmcujire.in, Website: www.sdmcujire.in

## FACULTY FEEDBACK FOR DESIGN AND REVIEW OF SYLLABUS

Please tick on a the scale with the appropriate response

Scale: 1 – Strongly Disagree, 2 – Disagree, 3 – Neutral, 4 – Agree and 5 – Strongly Agree

Sl.N o.	Particulars	1	2	3	4	5
1	Contents of syllabus are relevant to the course			✓		
2	Syllabus has a good balance between theory and practical aspects			✓		
3	Syllabus provides comprehensive knowledge and perspective in the subject area				✓	
4	Books prescribed/ listed as reference materials are appropriate, relevant and updated					✓
5	Current Syllabus adequately covers contemporary topics /global issues/emerging global and national trends in management				✓	
6	The specified contact hours stated in syllabus is sufficient to complete the syllabus				✓	
7	Sufficient reference materials and books are available in the library for the topics mentioned in the syllabus					✓
8	The evaluation methods mentioned in the syllabus are sufficient for providing proper assessment			✓		
9	Contents of the syllabus meets the expectations of the students in terms of learning values, skills, knowledge, attitude, analytical abilities, applicability, relevance and practical orientation to real life situations.				✓	

Any suggestions:

Ashalatha. S. Shetty

Name and Signature of Faculty



# SRIDHARMASTHALA MANJUNATHESHWARA COLLEGE (AUTONOMOUS)

UJIRE - 574 240



DAKSHINA KANNADA, KARNATAKA STATE

(Re-Accredited by NAAC at 'A' Grade with CGPA 3.61 out of 4)

Ph: 08256 236221, 236101 (O), Fax: 236220

e-Mail: sdmcollege@rediffmail.com, sdmcollege@sdmcujire.in, Website: www.sdmcujire.in

## FACULTY FEEDBACK FOR DESIGN AND REVIEW OF

### SYLLABUS

Please tick on a the scale with the appropriate response

Scale: 1 – Strongly Disagree, 2 – Disagree, 3 – Neutral, 4 – Agree and 5 – Strongly Agree

Sl.N o.	Particulars	1	2	3	4	5
1	Contents of syllabus are relevant to the course				✓	
2	Syllabus has a good balance between theory and practical aspects					✓
3	Syllabus provides comprehensive knowledge and perspective in the subject area				✓	
4	Books prescribed/ listed as reference materials are appropriate, relevant and updated				✓	
5	Current Syllabus adequately covers contemporary topics /global issues/emerging global and national trends in management					✓
6	The specified contact hours stated in syllabus is sufficient to complete the syllabus					✓
7	Sufficient reference materials and books are available in the library for the topics mentioned in the syllabus					✓
8	The evaluation methods mentioned in the syllabus are sufficient for providing proper assessment			✓		
9	Contents of the syllabus meets the expectations of the students in terms of learning values, skills, knowledge, attitude, analytical abilities, applicability, relevance and practical orientation to real life situations.			✓		

Any suggestions:

Some theory part of Anderson Bridge, De-sauty Bridge and Ballistic Galvanometer can be include to NRP Syllabus

Name and Signature of Faculty  
Revathi. S.



## FACULTY FEEDBACK FOR DESIGN AND REVIEW OF SYLLABUS

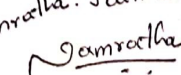
Please tick on a the scale with the appropriate response

Scale: 1 – Strongly Disagree, 2 – Disagree, 3 – Neutral, 4 – Agree and 5 – Strongly Agree

Sl.N o.	Particulars	1	2	3	4	5
1	Contents of syllabus are relevant to the course				✓	
2	Syllabus has a good balance between theory and practical aspects					✓
3	Syllabus provides comprehensive knowledge and perspective in the subject area			✓		
4	Books prescribed/ listed as reference materials are appropriate, relevant and updated				✓	
5	Current Syllabus adequately covers contemporary topics /global issues/emerging global and national trends in management			✓		
6	The specified contact hours stated in syllabus is sufficient to complete the syllabus					✓
7	Sufficient reference materials and books are available in the library for the topics mentioned in the syllabus					✓
8	The evaluation methods mentioned in the syllabus are sufficient for providing proper assessment				✓	
9	Contents of the syllabus meets the expectations of the students in terms of learning values, skills, knowledge, attitude, analytical abilities, applicability, relevance and practical orientation to real life situations.			✓		

Any suggestions:

Topics Related to  
measurement of Intensity  
of sound can be added  
to the syllabus.

Namratha. Jain.S  
  
 Name and Signature of Faculty

Namratha. Jain.S



# SRI DHARMASTHALA MANJUNATHESHWARA COLLEGE (AUTONOMOUS)

UJIRE - 574 240

DAKSHINA KANNADA, KARNATAKA STATE

(Re-Accredited by NAAC at 'A' Grade With CGPA 3.61 out of 4)

Ph: 08256-236221, 236101(0), Fax: 236220

e-Mail: sdmcollege@rediffmail.com, sdmcollege@sdmcollege.in, Website: www.sdmcollege.in

## FACULTY FEEDBACK FOR DESIGN AND REVIEW OF SYLLABUS

Please tick on a the scale with the appropriate response

Scale: 1 – Strongly Disagree, 2 – Disagree, 3 – Neutral, 4 – Agree and 5 – Strongly Agree

Sl.N o.	Particulars	1	2	3	4	5
1	Contents of syllabus are relevant to the course				✓	
2	Syllabus has a good balance between theory and practical aspects				✓	
3	Syllabus provides comprehensive knowledge and perspective in the subject area					✓
4	Books prescribed/ listed as reference materials are appropriate, relevant and updated				✓	
5	Current Syllabus adequately covers contemporary topics /global issues/emerging global and national trends in management			✓	✓	
6	The specified contact hours stated in syllabus is sufficient to complete the syllabus				✓	
7	Sufficient reference materials and books are available in the library for the topics mentioned in the syllabus					✓
8	The evaluation methods mentioned in the syllabus are sufficient for providing proper assessment					✓
9	Contents of the syllabus meets the expectations of the students in terms of learning values, skills, knowledge, attitude, analytical abilities, applicability, relevance and practical orientation to real life situations.				✓	

Any suggestions:

can include research and software related topics

Shridhar  
Name and Signature of Faculty

*(Signature)*

# SRI DHARMASTHALA MANJUNATHESHWARA COLLEGE (AUTONOMOUS)

UJIRE - 574 240



DAKSHINA KANNADA, KARNATAKA STATE

(Re-Accredited by NAAC at 'A' Grade with CGPA 3.61 out of 4)

Ph: 08256-236221, 236101(0), Fax: 236220

e-Mail:sdmcollege@rediffmail.com, sdmcollege@sdmcujire.in, Website: www.sdmcujire.in

## Department of Physics

### Feedback Analysis Report - 2022-23

The feedback on the curriculum of Physics was collected from stake holders (students, Teachers, and Alumni) during the year 2022-23. The feedback has been analysed and the following suggestions made by them are recorded for further follow up:

Sl. No	Stakeholders	No of stakeholders who gave feedback	Important Suggestions/Remarks
1	Students	10	<ul style="list-style-type: none"><li>Organize field visits or internships</li><li>Add more topics on Astrophysics</li></ul>
2	Teachers	10	<ul style="list-style-type: none"><li>Topics related to measurement of intensity of sound can be added to the syllabus</li><li>Addition of research and software related topics</li><li>Addition of Some theory part of Anderson's, De-Sauty bridges and Ballistic Galvanometer</li></ul>
3	Alumni	10	<ul style="list-style-type: none"><li>-</li><li>Organize field visits or internships</li><li>Add more practicals on electronics</li></ul>

*S.N. Kishore*  
HEAD  
Dept Of Physics  
S.D.M College (Autonomous)  
Ujire-574240

H.O.D



## **Department of Physics**

### **Action Taken Report on Feedback 2022-23**

1. The Suggestion given by the Students, Alumni, and Faculty were discussed in the Departmental Meeting. The members resolved to place the issue before the BoS with the required justification and specific details about the paper and the modification needed in the syllabus.
2. The issue was placed in the BoS meeting as a part of the agenda and it was resolved to incorporate following changes
3. To organise field visits
4. To add more practical's in Electronics

*Sri. K. K. Kulkarni*  
**HEAD**  
**Dept Of Physics**  
**S.D.M College (Autonomous)**  
**Ujire-574240**

**H.O.D**